

asigN – the application control panel for Windows™ and MAC™ applications

Hi Tech Systems has developed a system of highly configurable control panels, called "asigN", which can be connected to a wide range of equipment to provide push button switch control as an alternative to computer keyboards and mice. Using an optional intuitive Windows programme, buttons are assigned to the chosen functions of the connected hardware, and a variety of equipment can be connected to the same panel at the same time, via the various interface modules available

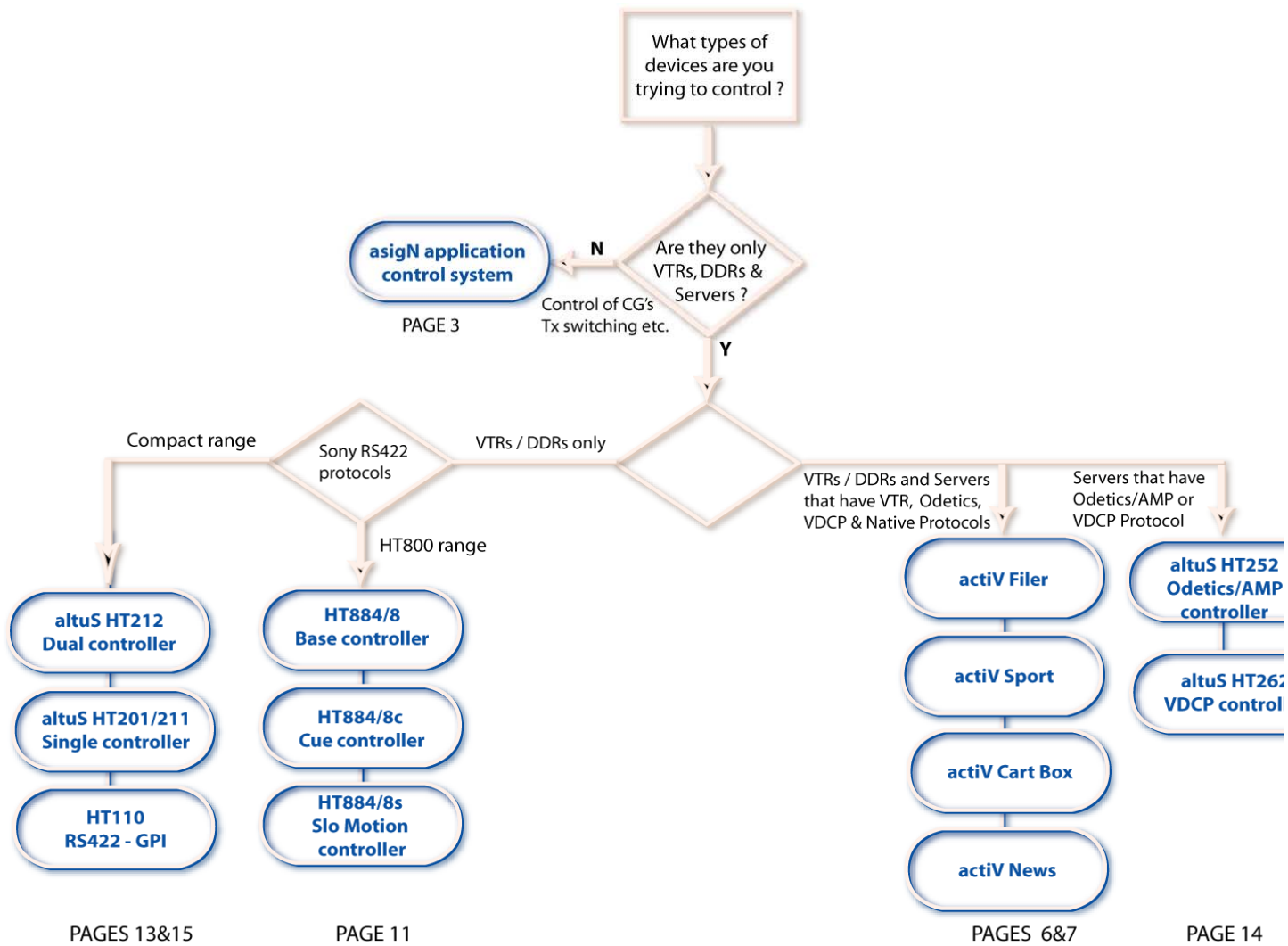
The basic product is equipped with a serial interface and configuration software. The keys can be programmed with text or graphical images, and can be assigned a range of colours. Additionally, the keys can be configured to latch, make momentary contact, bleep, change colour and so on, as the user wishes or the connected equipment demands.

The panels can be configured using the supplied asigN protocol and a PC or MAC, or by using the *asigN* software, which runs as a service on a host PC. *asigN* allows for very easy configuration of the appearance of the LCD keys, and features a unique drag and drop function to allocate any Windows™ application button to any LCD key. The HT604, HT624 and HT634 panels have a wheel, which can be programmed to scroll, adjust levels or jog/shuttle using *asigN*. Additionally, equipment can be connected via an optional GPI module, optional Ethernet module, or the panel can be connected as a Human Interface Device via an optional USB module to a PC or MAC™.

The application can be closed, and control will resume as programmed when it is re-opened. Windows application functions

such as scroll or volume, which are adjusted with a mouse and slider can be allocated to a button and the control wheel for adjustment. Multiple applications can be controlled on one PC, or, if the optional Ethernet module is used as the interface, on many PCs. The panels are powered by an external power supply, a second can be added as a back up. The asigN protocol and technical manuals are supplied with the panels. The *asigN* software is supplied as standard with two licences, one for off-line configuration and one for on-line operation. Additional licences are available for control of multiple computers.





asigN application control panel range

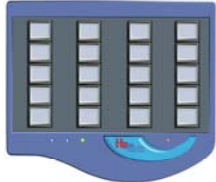
HT604



application control panel with wheel

- Six LCD keys plus wheel for application sliders
- Ethernet control port (No expansion slots or serial interface)
- Configured using supplied *asigN* protocol
- Windows buttons programmed with *lasigN* software, two licences supplied*
- LCD keys can be configured for colour, legend, action and function controlled
- Optional back up power supply with automatic switchover

HT614



application control panel

- Twenty LCD keys in four columns
- Serial (RS422) control port
- Optional modules for Ethernet, GPI or USB connection
- Two module slots - Can be one each of GPI, USB or Ethernet
- Configured using supplied *lasigN* software or *asigN* protocol
- Windows buttons programmed with *lasigN* software, two licences supplied*
- LCD keys can be configured for colour, legend, action and function controlled
- Optional back up power supply with automatic switchover

HT624



application control panel with wheel

- As HT614 (above) plus wheel for application sliders

HT634



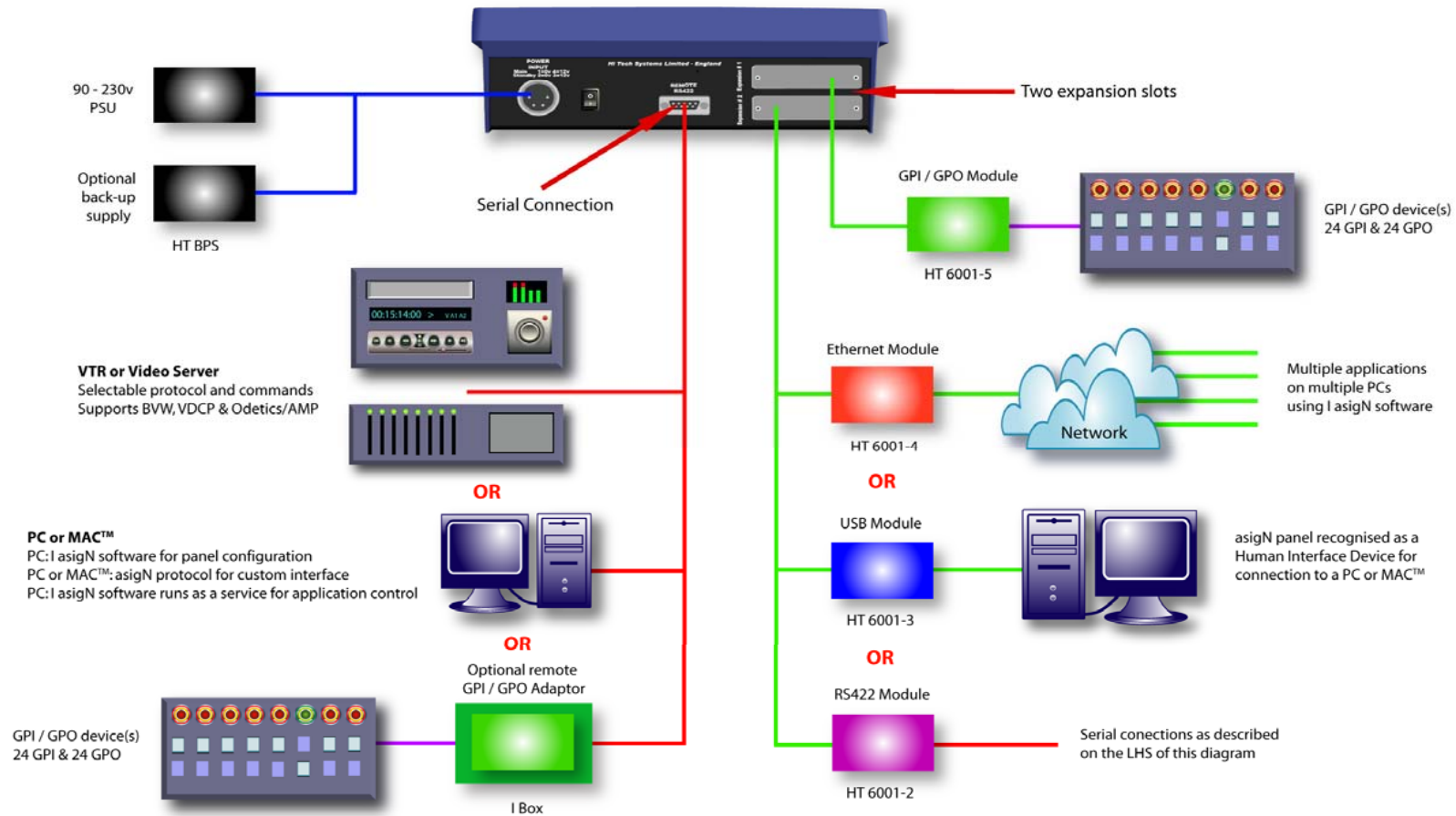
application control panel with wheel

- As HT614 (above), 10 LCD keys and wheel for application sliders
- 19" rack mountable

asigN application control panel

A system of hardware panels to control multiple Windows™ or MAC™ applications, plus VTRs, Servers and GPI / GPO devices

Note: HT 604 has one Ethernet connector, no expansion slots or serial interface



Copyright 2009 Hi Tech Systems Ltd

asigN application control panel range

Options

I Box
HT6001-2
HT6001-3
HT6001-4
HT6001-5
HTBPS
lasigN
Developer

- Remote GPI module, 24 GPI, 24 GPO. Controlled from asigN panel. 1U 19" rackmount case
 - RS422 Serial module
 - USB module
 - Ethernet module
 - GPI module, 24 GPI, 24 GPO.
 - Back-up power supply and adaptor cable
 - *Additional *lasigN* licences, one required per networked PC
- The asigN range can be supplied for software application developers

actiV - Server Controller Range

actiV Filer



HT445

5 Channel Video Server Controller

- Store/recall up to 2000 clips and cue in/out points
- Controls a large range of VTRs and Disk Systems including user selectable VDCP (Louth), Odectics, AMP protocol, (superior clip handling, directory control, timecode track, sub clips) or Sony RS422 9 pin protocol
- High contrast 5.5 inch graphic display
- Intelligent channel selection keys show clip ID and timecode information.
- VTR style transport controls
- Programmable Jog, Shuttle & Variable speed knob sensitivity control
- ON-AIR signalling to operator when controller is in LIVE operation, can also be triggered from remote connector
- Single playlist - play clips back to back, add breaks, skip clips, edit playlist

actiV Sports



HT445s

Sports actiV Filer with T-Bar option

Same specifications as actiV Filer with additionally :-

- Multiple server configurations for record and replay
- Variable speed control T-Bar
- Trick keys for rapid recall of various playback features, such as playlists, clip server database, record side timecode (E-E) etc.
- Rapid cue mode for instant re-cue and playback from record to playback
- Single playlist - play clips back to back, add breaks, skip clips, edit playlist

actiV Cart Box



HT446

5 Channel "Shot Box" style Video Server Controller

- Similar in features and inputs / outputs to the actiV Filer combined with built in Shot Box capability
- Play, Freeze and Re-cue buttons for each channel
- Integrated Shot Box can load and cue a total of 700 cues for instant access
- Each video clip name displayed on the shot keys
- High contrast 5.5 inch graphic display
- Single playlist - play clips back to back, add breaks, skip clips, edit playlist

actiV News

HT447



News Playout System without needing an automation system

- Betacart styled control panel
- MOS interface to Newsroom Computer System
- System comprises the News Box control panel and News Manager software
- Controls up to 4 ports of most servers
- Does not require an automation system
- Clips automatically assigned to shot keys
- Dynamic updates to and from the NRCS of clip status, server status and rundown list

actiV Options

HT445/pm

HT445/pp

HT445/ps/mav

HT445/pq



*These options are available as a package

Protocols

- **Mix** VTR and disk protocol - control server and VTR from any actiV controller for VTR ingest, tape backup, automation etc
- **Profile** - native Profile protocol, superior clip handling, directory control, timecode track, sub clips
- **Sony MAV** - native control protocol - only way to control the MAV555
- **Quantel** - native control protocol - only way to control the Quantel range of servers

HT445/ki



Keyboard interface (Note: Keyboard not included)

- Enables actiV controller operator to enter text, for example to make up descriptive clip names

HT445/ps



Playlist scheduling

- Adds additional playlists to the standard 1 playlist supplied
- 10 playlists each containing 249 entries - play clips back to back, add breaks, skip clips, edit playlist

HT445/Pbus

Pbus II interface

- Interface to a video switcher so that pre-set sequences can be started by the switcher

HT445/ch

Control Highway

- Allows remote control of VTRs or servers over a network
- Network delays of up to 10ms do not affect control performance
- One Control Highway required per control port

actiV Options

HT445/sr



*These options are available as a package

Schedule recording

- Schedule in advance clips to be recorded

HT445/ads



Advanced Disk searching (includes keyboard interface)

- Allows operator to configure filters to search a large clip databases for only specific clips.

HT445/ms



Master to Slave linking



- Link 2 controllers of any type to send clip data as a background function from one controller to another. Uses one control port per controller for the link. price inclusive for both controllers.

HT445/gpi



GPI Interface

- 8 in - 8 out GPI interface for actiV controllers that can be operator configured

HT445/shot



Shot Box Keyboard (includes keyboard interface)

- Option accessory for actiV Filer and actiV Sports
- Provides up to 700 cues each for instant clip recall
- Play, Freeze and Re-cue buttons for each channel
- Rapidly assign cues to shot buttons from the Shot Box or assign cues to Shot Box keys via the actiV Filer

HT445/cue



Cue Box Keyboard (includes keyboard interface)

- Option accessory for actiV Filer, Sports & Cart Box
- Custom programmable keyboard used to mark in/out cues with user designated descriptive remarks
- Up to 32 characters of text description for each cue

actiV Options

actiV Loader



***These options are available as a package**

actiV Loader * (Note: requires playlist scheduling option)

- Windows application accepts and translates industry standard play-lists and makes them available for use by the actiV controller

Cart Box Edit



Cart Box Editor *

- Editing software for the actiV Cart Box - drag and drop Integration for actiV Cart Box to streamline On-Air Operations.

* S/W requires a spare RS232 port and serial cable. Runs on PC with Windows 98/NT/2000/XP and uses one control port on the controller. One licence req'd for every actiV controlled.

HTBPS

Back-up power supply and adaptor cable

Any actiV Controller can be installed with the following options at time of initial purchase

Mix VTR

Keyboard interface

Playlist Scheduling

Advanced Disk searching

Total cost of packaged options, in addition to the controller cost

altuS 800 series VTR / DDR controller

See page 10 for additional options

HT800



HT884
HT888

VTR and DDR Controller

- Control of up to 4 or 8 VTR's
- Store and recall from a pool of 250 cues
- Simultaneous multi machine control
- Bright interactive two line display
- Play and Record lock modes
- Jog, Shuttle, and Variable speed control wheel
- Programmable cueing modes

HT800c



HT884c
HT888c

VTR and DDR Cue Controller

- Same specifications as the HT800, with the addition of a keypad for numerical search and cue methods

HT800s



HT884s
HT888s

VTR and DDR Slo Motion Controller

- Control of up to 2 or 4 Record/Playback pairs of DDR in disk mode or up to 4 or 8 VTR's in VTR mode
- Same specification as HT800c with the addition of a T-Bar control
- Dynamic slow motion replays directly accessed from the T Bar
- T-Bar Shuttle mode
- 5 Variable speed replay modes

altuS 800 Series Options

dualinX

Technology

- Provides independent control of any connected VTR or DDR as if connected locally
- Any combination of HT800 series can be paired
- VTRs or DDRs are connected to a master controller, the slave can be up to 1Km away
- RS422 connection between the two units
- Cue points are stored in the master, accessible by either controller
- All ports are available to either controller, provided that they are not in active use

HT800/gpi



- 4 in - 4 out GPI interface for HT800 controllers

altuS 200 series VTR/DDR compact controller

HT212



Dual Machine VTR Controller

- 2 machine Sony RS422 9 pin protocol
- Mark and recall 100 cue locations
- LCD display for time code and data information
- Programmable cueing modes
- Jog, Shuttle, and Variable speed control knob.

HT212E



Dual Machine VTR Edit Controller

- 2 machine Sony RS422 9 pin protocol
- Assemble or insert edit of video and /or up to eight audio tracks
- Auto edit
- LCD display for time code and data information
- Jog, Shuttle, and Variable speed control knob.

HT211



Single Machine VTR Controller inc display

- Sony RS422 9 pin protocol
- Jog, Shuttle and Variable speed control knob
- Mark and search to 100 cue points
- LCD display for time code and data information

HT201



Single Machine VTR Controller

- Sony RS422 9 pin protocol
- Jog, Shuttle and Variable speed control knob
- Mark and search to cue point mode
- Mark and recall 5 cue locations accessible from dedicated keys.

altuS Odetics/AMP & VDCP compact controller range

HT252



Dual Machine Server Controller

- Odetics and AMP protocols - 2 ports
- Stores 99 clips in memory and 5 on shot keys
- LCD display for time code and data information
- "Clip Navigation" joy stick
- Jog, Shuttle, and Variable speed control knob.
- keyboard interface for clip naming
- Gang channels for simultaneous play or record

HT262



Dual Machine Server Controller

- VDCP protocol - 2 ports
- Stores 99 clips in memory and 5 on shot keys
- LCD display for time code and data information
- "Clip Navigation" joy stick
- Jog, Shuttle, and Variable speed control knob.
- keyboard interface for clip naming
- Gang channels for simultaneous play or record

HT110

HT110



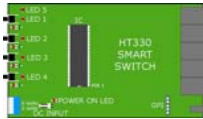
RS422 to GPI (Includes external power supply)

- Converts RS422 VTR protocol to GPI contact closures

HT330

HT330Case

HT330Frame



Smart Switch

- Share control of a single VTR or server to 4 control panels (Max). Supplied as a single Euro Card.
- Euro card case and separate PSU for single Smart Switch
- Euro card 1U rack frame for up to 6 Smart Switches

Spares

Flight Case

Manual xx

HT8821/m

HT8821/f

PSU

- Flight case for **HT800** series and **actiV** filers
- Printed operators manual (Please specify model)
- Spare RJ45 to 9 pin D'type adaptor - male
- Spare RJ45 to 9 pin D'type adaptor - female
- Spare 9 volt power supply for HT110

Software Upgrades and Training

- S/W upgrade Wizard for **actiV**, **altuS** & **asigN** ranges - download from the web site
- Upgrade of controller features
- On site training
- Maintenance contracts

Hi Tech Systems Ltd Holbrook House, Oakley Lane, Oakley, Basingstoke, Hants. RG23 7JY U.K.

Tel: +44 (0) 1256 780880 Fax: +44 (0) 1256 782600 Email: sales@hitechsys.co.uk

The prices are effective from the date shown above and supersede all previous prices. See individual product literature for a complete list of product specifications and features. Server controllers are supplied with 5 x RJ45 to D' type adaptors. Installation and Operational manuals are supplied on CD. All Prices are ex-works and exclude taxes, duties and VAT. Prices and specifications subject to change without notice. Goods are supplied subject to our terms and conditions. E & O E.